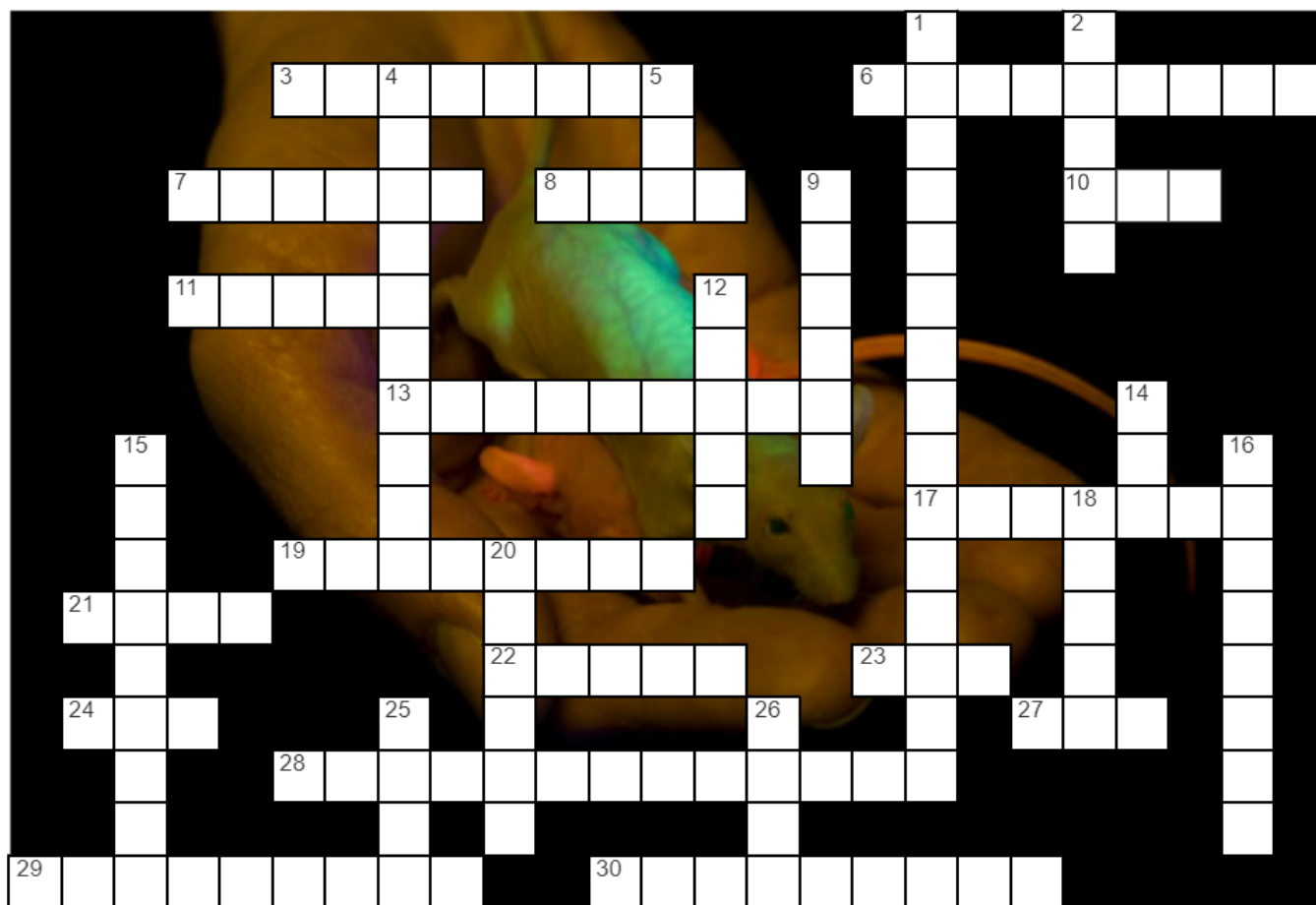


Findings (September 2009)

A National Institute of General Medical Sciences Crossword Puzzle



NIH National Institute of General Medical Sciences



Across ►

3. Fluid flow
6. 24-hour rhythm
7. Cell neighborhood
8. Beach floor
10. Inky pencil
11. Ice, once
13. Throbbing
17. Business end of a nerve cell
19. Gets drugs to its target
21. Popular early-morning class
22. Rest
23. Letters of a genome word
24. 238-a.a. protein
27. Buzzer
28. Can be broken down
29. Rotund
30. Nobel city

Down ▼

1. Light, naturally
2. Not sad
4. Natural Coast Guard patrol
5. Earth's light
9. Computational chemist Marc
12. Ball's companion
14. Coffee holder
15. GFP source, originally
16. Summer thirst quencher
18. Arsenic cleaner
20. Blood transporter
25. Chemical engineer Eniola-Adefeso
26. Minority researcher program

Answer Key

Across ►

3. DYNAMICS
6. CIRCADIAN
7. TISSUE
8. SAND
10. PEN
11. WATER
13. PULSATILE
17. SYNAPSE
19. DELIVERY
21. GLOW
22. SLEEP
23. DNA
24. GFP
27. BEE
28. BIODEGRADABLE
29. SPHERICAL
30. STOCKHOLM

Down ▼

1. BIOLUMINESCENCE
2. HAPPY
4. NEUTROPHIL
5. SUN
9. ZIMMER
12. STICK
14. CUP
15. JELLYFISH
16. LEMONADE
18. ALGAE
20. VESSEL
25. LOLA
26. MARC

NIGMS is a part of the National Institutes of Health that supports basic research to increase our understanding of biological processes and lay the foundation for advances in disease diagnosis, treatment, and prevention. For more information on the Institute's research and training programs, visit <https://www.nigms.nih.gov>.