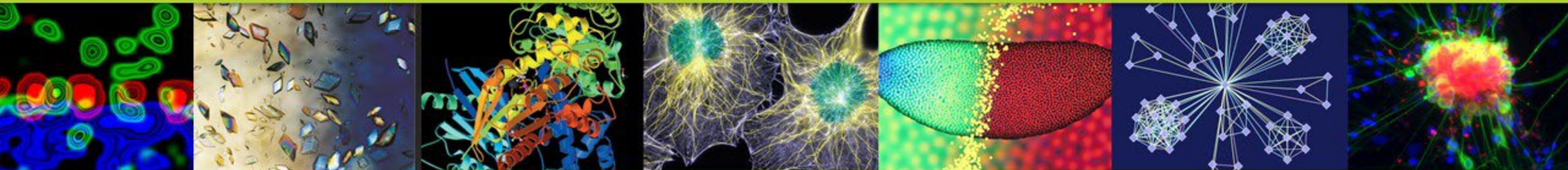


IDeA Program 2020: Progress and Initiatives

Ming Lei, PhD

Director, Division for Research Capacity Building
NIGMS



Welcome to the IDeA Program, FY20 Co-Funded PIs

R01 Awards (15)

PI	Institution	IC
RACHAGANI, SATYANARAYANA	UNIVERSITY OF NEBRASKA MEDICAL CENTER	NCI
CHENG, NIKKI	UNIVERSITY OF KANSAS MEDICAL CENTER	NCI
MITCHELL, DIANA	UNIVERSITY OF IDAHO	NEI
GE, XIJIN	SOUTH DAKOTA STATE UNIVERSITY	NHGRI
FENG EARLEY, YUMEI	UNIVERSITY OF NEVADA RENO	NHLBI
JACKSON, KRISTINA MELIA	BROWN UNIVERSITY	NIAAA
CUNNINGHAM, LEE ANNA	UNIVERSITY OF NEW MEXICO HEALTH SCIS CTR	NIAAA
KOLLS, JAY K	TULANE UNIVERSITY OF LOUISIANA	NIAID
XIONG, JINHU	UNIV OF ARKANSAS FOR MED SCIS	NIAMS
LU, X LUCAS	UNIVERSITY OF DELAWARE	NIAMS
SCHREURS, BERNARD G	WEST VIRGINIA UNIVERSITY	NICHD
SAMUELSEN, CHAD L	UNIVERSITY OF LOUISVILLE	NIDCD
JACOBSON, NICHOLAS CHARLES	DARTMOUTH COLLEGE	NIMH
MYASKOVSKY, LARISSA	UNIVERSITY OF NEW MEXICO HEALTH SCIS CTR	NIMHD
RENDEN, ROBERT B	UNIVERSITY OF NEVADA RENO	NINDS

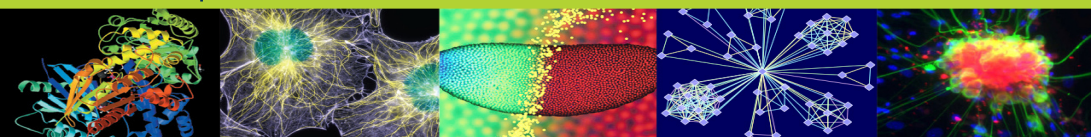
R15 Awards (8)

PI	Institution	IC
REINDL, KATIE	NORTH DAKOTA STATE UNIVERSITY	NCI
JORCYK, CHERYL LYNN	BOISE STATE UNIVERSITY	NCI
WETZEL, SCOTT ALLEN	UNIVERSITY OF MONTANA	NIAID
THORNTON, JUSTIN A	MISSISSIPPI STATE UNIVERSITY	NIAID
VASSAR, MATT	OSU CENTER FOR HEALTH SCIENCES	NIDA
POWDER, KARA E	CLEMSON UNIVERSITY	NIDCR
ZERUTH, GARY T	MURRAY STATE UNIVERSITY	NIDDK
BALDWIN, WILLIAM S	CLEMSON UNIVERSITY	NIEHS

S10 Awards (5)

PI	Institution	IC
WU, DEE H	UNIVERSITY OF OKLAHOMA HLTH SCIENCES CTR	OD
GARNEAU-TSODIKOVA, SYLVIE	UNIVERSITY OF KENTUCKY	OD
GOOZ, MONIKA	MEDICAL UNIVERSITY OF SOUTH CAROLINA	OD
VARY, CALVIN PARDEE HULL	MAINEHEALTH	OD
BOTHNER, BRIAN P	MONTANA STATE UNIVERSITY - BOZEMAN	OD

Applications submitted to 16 NIH Institutes/Centers and OD/Funding enabled by the IDeA Program



Welcome to the IDeA Program, FY20 COBRE PIs



Juergen Richt, KSU
Emerging & Zoonotic
Infectious Diseases



Matthew Campen, UNM-HSC
Metals in Biology
& Medicine



Jon Thorson, UKy
Pharmaceutical Research
& Innovation



Jacqueline Stephens, LSU Pennington
Metabolic Basis
of Disease



Curtis Noonan, UMT
Population Health
Research



Jimmy Ballard, UOK
Micro. Pathogenesis
& Immunity



Ron Prinz, USC
Child Well-Being



Tony Wilson, UNMC
Cognitive
Neuroscience of Dev
& Aging Center



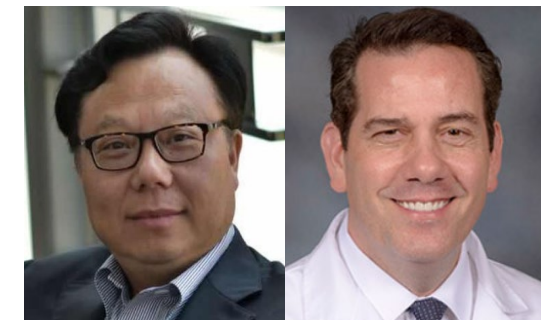
Stephen Duncan, MUSC
Digestive & Liver
Disease



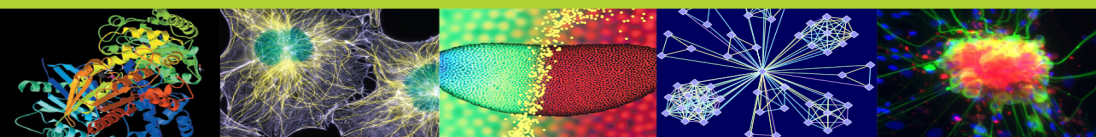
Joshua Sharp & Samir Ross, UMS
Glycoscience COBRE



Mary Cushman & Mark Nelson, UVT
Cardiovascular & Brain Health



Jun Yan & Jason Chesney, U of Louisville
Cancer Immunology &
Immunotherapy



Welcome to the IDeA Program, Puerto Rico CTR PIs



Marcia Cruz-Correa & Carlos Luciano, UPR

IDeA-CTR: Hispanic Alliance for Clinical & Translational Research

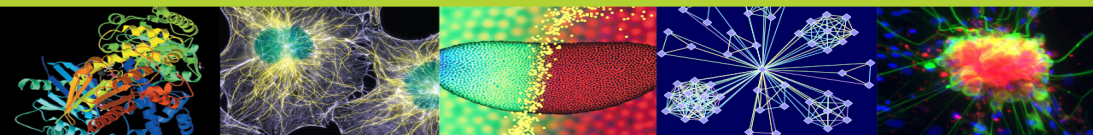
Active Awards in IDeA Portfolio:

COBREs:	112
INBREs:	24
IDeA-CTRs:	12
IDeA STTR Accelerator Hubs:	4
IDeA Co-Funded R01/R15/S10:	39
Supplements to IDeA grants:	51

Funded by \$386,573,000 Congressional Appropriation and additional ~\$17,000,000 from NIGMS, NIH OD & other ICs

[IDeA Interactive Portfolio Dashboard](https://www.nigms.nih.gov/Research/DRCB/IDeA/Pages/default.aspx)

<https://www.nigms.nih.gov/Research/DRCB/IDeA/Pages/default.aspx>



Research Funding > Division for Research Capacity Building > IDeA Interactive Portfolio Dashboard

NIGMS Home

- Research Areas +

- Research Training +

- Capacity Building +

- Grants and Funding +

- Science Education +

- News and Events +

- About NIGMS +

IDeA Interactive Portfolio Dashboard

Current active DRCB awards.
Click on a state/territory to view awards.

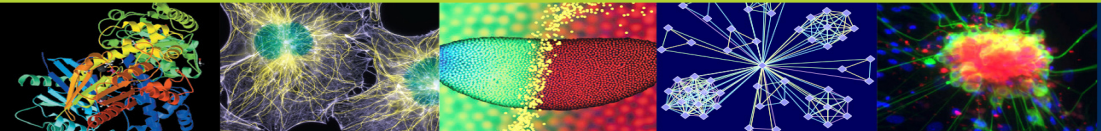
BY PROGRAM BY STATE/TERRITORY

FILTER BY STATE ▾

250 total awards \$412,047,634 total awarded dollars \$407,766,666 IDeA total awarded dollars Export

SUB-PROGRAM	Award Count	Total Dollars	IDeA Total Dollars
IDeA - COBRE Centers	124	\$242,313,883	\$242,313,883
IDeA - INBRE Centers	35	\$89,905,663	\$89,905,663
IDeA - CTR	13	\$40,729,223	\$40,729,223
IDeA - Co-Funding	68	\$28,262,799	\$28,262,799
IDeA - Regional Technology Transfer Accelerator Hubs	3	\$4,280,968	\$0
IDeA - Other Research	7	\$6,555,098	\$6,555,098

| IDeA Interactive Portfolio Dashboard – By Program



Research Funding > Division for Research Capacity Building > IDeA Interactive Portfolio Dashboard

NIGMS Home

- Research Areas (+)
- Research Training (+)
- Capacity Building (+)
- Grants and Funding (+)
- Science Education (+)
- News and Events (+)
- About NIGMS (+)

IDeA Interactive Portfolio Dashboard

Current active DRCB awards.
Click on a state/territory to view awards.

BY PROGRAM

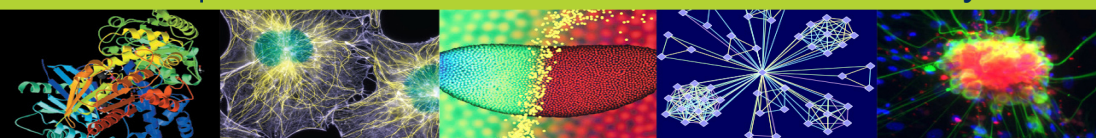
BY STATE/TERRITORY

FILTER BY PROGRAM -

States/Territories **250** total awards **\$412,047,634** total awarded dollars **\$407,766,666** IDeA total awarded dollars Export

State	Award Count	Total Dollars	IDeA Total Dollars
AK	4	\$6,728,393	\$6,728,393
AR	10	\$15,123,220	\$15,123,220
DE	13	\$20,845,075	\$20,845,075
HI	6	\$10,734,677	\$10,734,677
ID	10	\$11,306,237	\$11,306,237
KS	14	\$20,487,170	\$20,487,170

| IDeA Interactive Portfolio Dashboard – By State/Territory



IDeA Interactive Portfolio Dashboard

Current active DRCB awards.


Click on a state/territory to view awards.

BY PROGRAM

BY STATE/TERRITORY

FILTER BY PROGRAM ▾

AK ✕

 [Return to States/Territories](#)

4 total awards

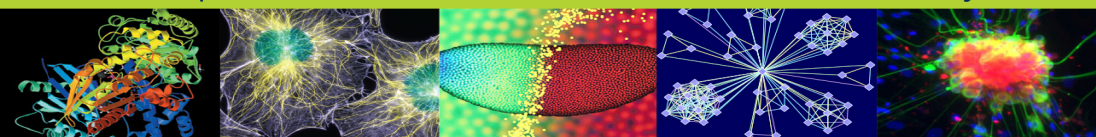
\$6,728,393 total awarded dollars

\$6,728,393 IDeA total awarded dollars

 [Export](#)

Project	PI	Institution	FY	Cong Dist	Total Dollars
3P20GM103395-20S1	BARNES, BRIAN M	UNIVERSITY OF ALASKA FAIRBANKS	2020	AK-00	\$131,395
1R15GM122038-01	MILLIGAN-MYHRE, KATHRYN C.A.	UNIVERSITY OF ALASKA ANCHORAGE	2017	AK-00	\$427,249
5P20GM130443-02	DREW, KELLY L	UNIVERSITY OF ALASKA FAIRBANKS	2020	AK-00	\$2,303,450
5P20GM103395-20	BARNES, BRIAN M	UNIVERSITY OF ALASKA FAIRBANKS	2020	AK-00	\$3,866,299

| IDeA Interactive Portfolio Dashboard – By State (AK)



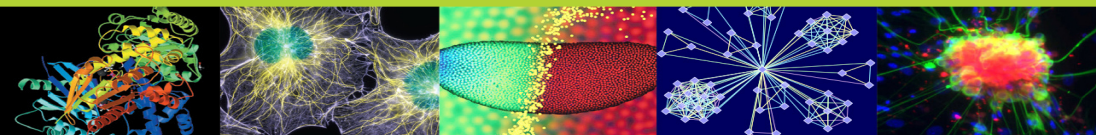
Invitations and Advice to the 2020 Class of IDeA PIs

IDeA Co-Funded PIs:

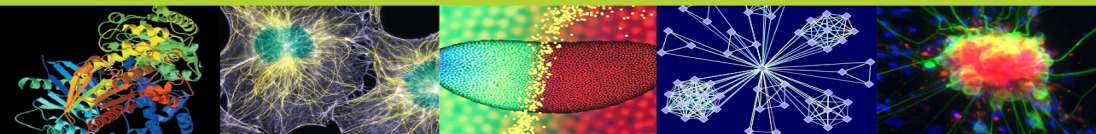
- **Take advantage of and contribute to the IDeA programs/network**

COBRE and CTR PIs:

- **Engage your institutional leaders on a regular basis; tell them your contribution to the institution and your needs to develop and sustain the success of the program**
- **Leverage resources invested by IDeA and other NIH programs in your institution and state: collaboration for synergy**



Promote & Support Intra-IDeA Program Collaborations



Supplements to INBREs for Cross Program Collaborations

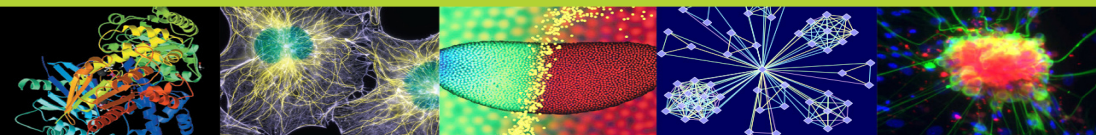
Support Research Collaboration between an INBRE and a COBRE, CTR, **CTSA or ISPCTN**
(\$100,000 DC for one year; INBRE Investigator 60% / Collaborator(s) 40%)

- To provide INBRE investigators and students with opportunities to conduct research alongside investigators at research-intensive institutions
- To help COBREs and IDeA-CTRs to develop research workforce pipeline

FY2019: 18 Applications, 16 Awards; FY2020: 13 Applications, 13 Awards

FY2021:

- *Include IDeA Co-funded PIs as eligible collaborators*
- *Expand the initiative to support collaborations among COBREs and IDeA CTRs*



Division for Research Capacity Building > Institutional Development Award > Active IDeA-Supported Cores and Facilities, FY19

- NIGMS Home**
- Research Areas (+)
- Research Training (+)
- Capacity Building (+)
- Grants and Funding (+)
- Science Education (+)
- News and Events (+)
- About NIGMS (+)

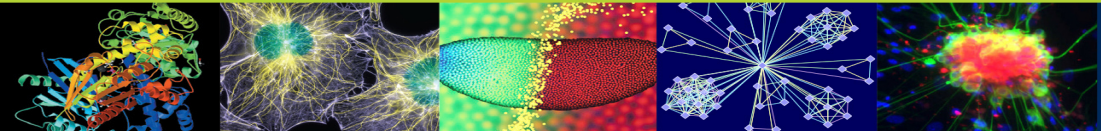
Active IDeA-Supported Cores and Facilities, FY19

The listings are updated annually after the fiscal year-end.

[Download as CSV](#) [Expand All](#)

- + Alaska**
- + Arkansas**
- + Delaware**
- + Hawaii**

| Active IDeA-Supported Cores and Facilities, FY19 - Collapsed



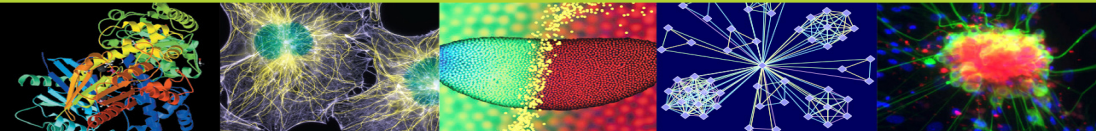
Active IDeA-Supported Cores and Facilities, FY19

The listings are updated annually after the fiscal year-end.

[Download as CSV](#)

[Collapse All](#)

- Alaska			
Award ¹	Award Title	Institution	Core ²⁻⁴
INBRE-GM103395	Alaska INBRE 4 One Health	University of Alaska Fairbanks	Bioinformatics Core
		University of Alaska Fairbanks	Research Experiences Core
		University of Alaska Fairbanks	Sustaining Research Excellence Core
IDeA-CTR-GM115371	American Indian - Alaska Native Clinical and Translational Research Center (AI-AN CTRC)	University of Alaska Fairbanks	Community Engagement and Outreach Core
		Alaska Native Tribal Health	Research Design, Epidemiology



Entrepreneurial Education Workshop For Core Directors

October 5th

Core Business is designed for Core Directors and introduces helpful business skills to ease management and improve the top and bottom lines

<https://www.eventbrite.com/e/core-business-virtual-meeting-tickets-118641450773>

DRIVEN:

Core Business

Supported by NIGMS
grant: U13GM 103387

Virtual Meeting

October 5th, 2020, 1- 5PM EST

Four hours that can transform your Core's business

Core Business is designed for Core Directors, and introduces helpful business skills to ease management and improve the top and bottom lines of Core Facilities:

- **Business Fundamentals**
Value propositions, pricing, and budgeting
- **Risks and Teams**
The "Risk Up Front" method of risk and project management
- **Core Support Communities**
The Association of Biomolecular Resource Facilities (ABRF) and Meenta
- **Core Offerings from a Pharma Perspective**
How Pharma views the biomarkers business
- **Marketing Case Study**
Comprehensive analytics for a successful go-to-market strategy

Speakers



Gabor Bethlendy
Meenta



Doug Chung
Harvard Business School



Julie Coleman
Celdara Medical



Rick Greenwald
Simbex



Adam Josephs
Celerity Consulting



Yolanda Nesbeth
BMS

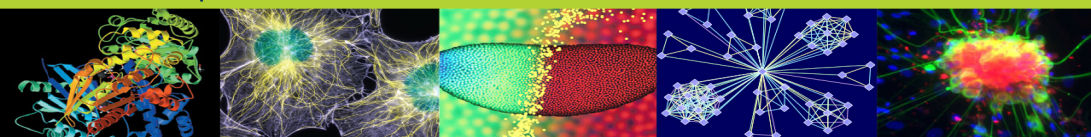


Jake Reder
Celdara Medical

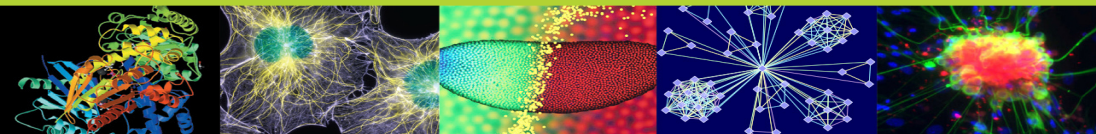


Andrew Vinard
ABRF

[Register](#)

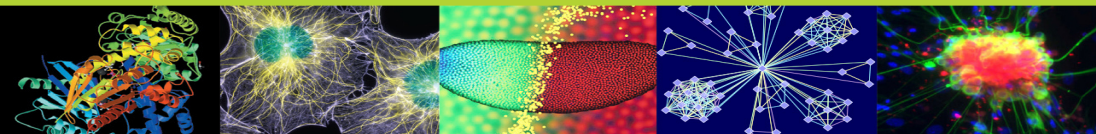
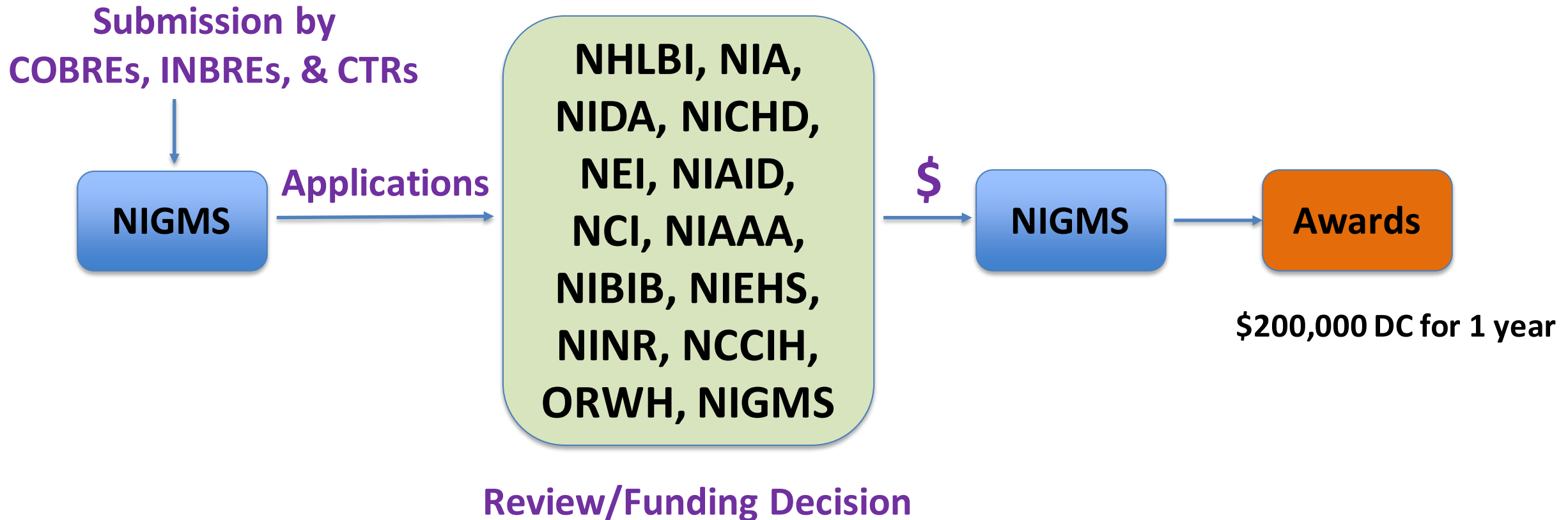


Develop Collaborations With non-IDeA Funding Programs



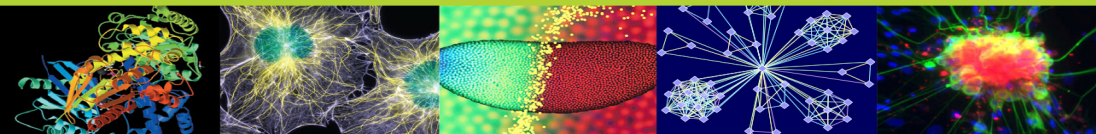
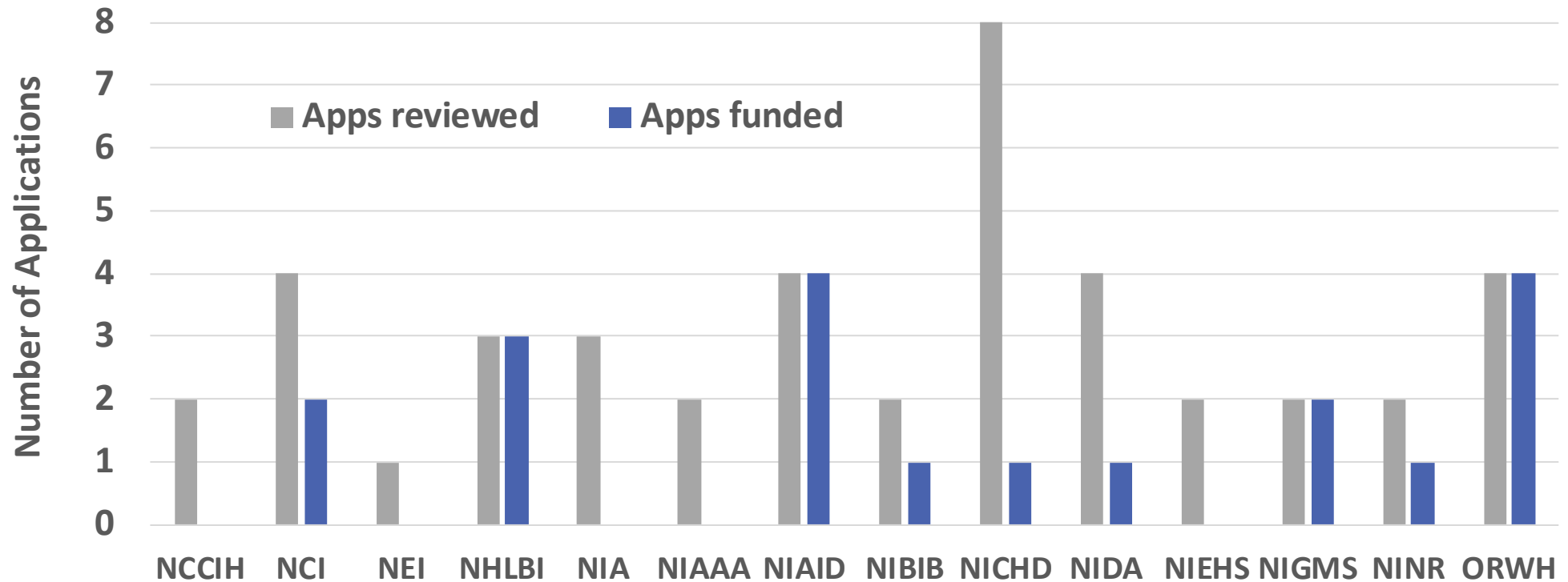
Supplements for Research on Women's Health in the IDeA States

NOT-GM-20-017: To expand research and research capability in the IDeA states to address important issues of women's health.



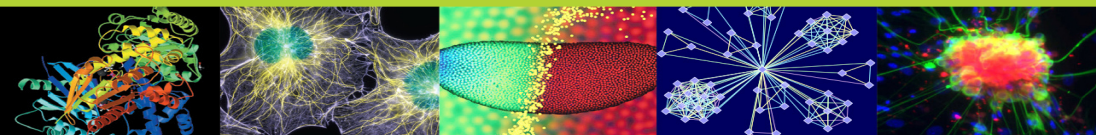
25% Response Rate, Better than 50% Success Rate

- 37 Applications received and assigned to different NIH Institutes/Centers/Offices (ICOs)
- **19 applications** were selected for funding
- **9 ICOs** provided **\$4.8 million** in total costs



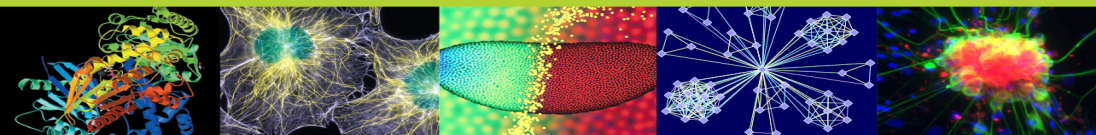
Other Collaborations with non-IDeA Programs

- **IDeA State COVID-19 Registry/N3C** IDeA/NIGMS, NCATS, and NIH OD
- **RADx-UP** IDeA/NIGMS and NIH OD
- **Community-Engaged Research Alliance (CEAL)** IDeA/NIGMS and NIH OD, NIMHD, NHLBI
- **COVID-19 Modeling and Discovery** IDeA/NIGMS and NIGMS
- **Alzheimer's Disease Research (10 awards)** IDeA/NIGMS and NIA



Collaboration with non-IDeA Programs: A Win-Win for All

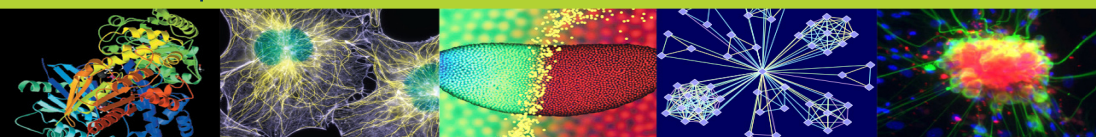
- Strengthened NIH effort to address the maternal mortality and morbidity crisis through research in IDeA states
- Provided additional funding to the IDeA program investigators to expand their research on women's health
- Built connections between NIH institutes and IDeA investigators whose work is in those institutes' respective mission areas
- Showcased the strength of IDeA-supported programs and provided NIH institutes a platform to support research in IDeA states



A Brilliant Program and Grants Management Team

Krishan Arora, PhD
Julia Barthold, MD
L. Tony Beck, PhD
Federico Bernal, PhD
Sheila Caldwell, PhD
Pauline Cupit, PhD
Behrouz Davani, PhD
Hongwei Gao, MD, PhD
Zuzana Justinova, MD, PhD
Irina Krasnova, PhD
Michele McGuirl, PhD
Melissa Wan
Yang Zhou, PhD

Christy Leake
Andrea Culhane
Samantha Farrell
Lisa Hildred
Brian Iglesias
Arina Kramer
Courtney Tardd-Wright
Emily Tran



Questions?

